

# PicStamper Tutorial

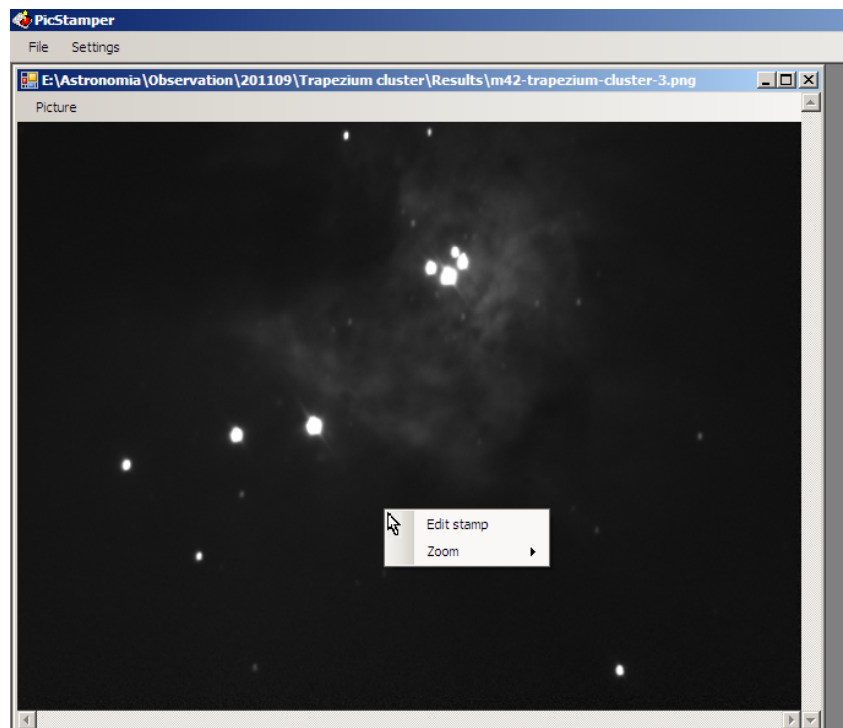
## Introduction

PicStamper is a simple program that lets you to place a stamp on any image, containing information such as its title, author's name, exposure time and other stuff... Stamp's fields can be fully customized: you can edit the information structure as well as visual appearance (font size, colors ...).

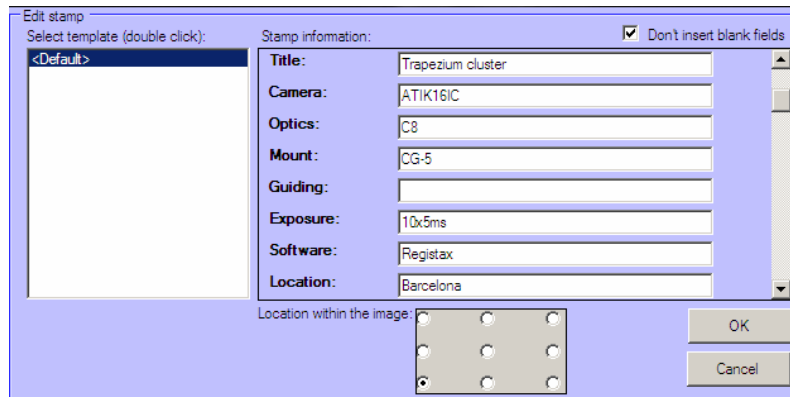
## Placing the first stamp

PicStamper comes with a ready-to-use default stamp template. To place it on an image, follow the steps below:

- 1) In **File** menu, select **Open picture** and select the picture you want to stamp. You can also drag and drop a picture file from Windows explorer into the PicStamper window. NOTE: don't worry; the original image will not be altered.
- 2) Once the image is loaded, right-click on it to show a pop-up menu and select **Edit stamp**:



- 3) The stamp editor panel is shown. This panel lets you to select a stamp template and to fill it in with data, to finally place it on the image:

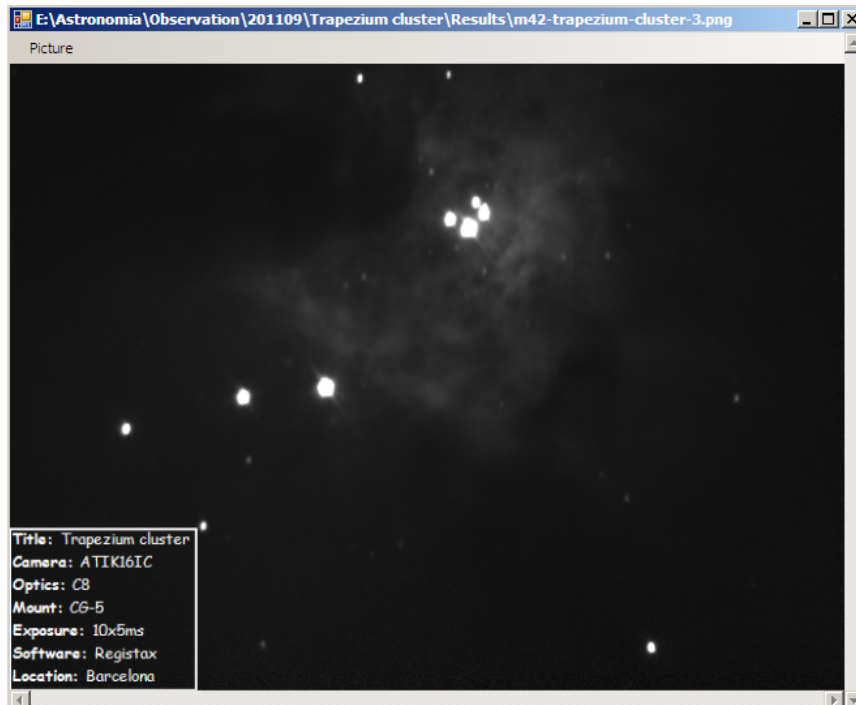


The list on the left contains the templates that are currently available and you can select one by double clicking on it. The <Default> template is selected by default. The information fields appear on the right and you must fill in at least 1 field to create the stamp.

The checkbox on the upper right corner of the editor panel allows you to avoid placing unspecified (i.e. left blank) fields.

Finally, you should select the location the stamp will be placed on within the image. By default, the lower left corner is selected.

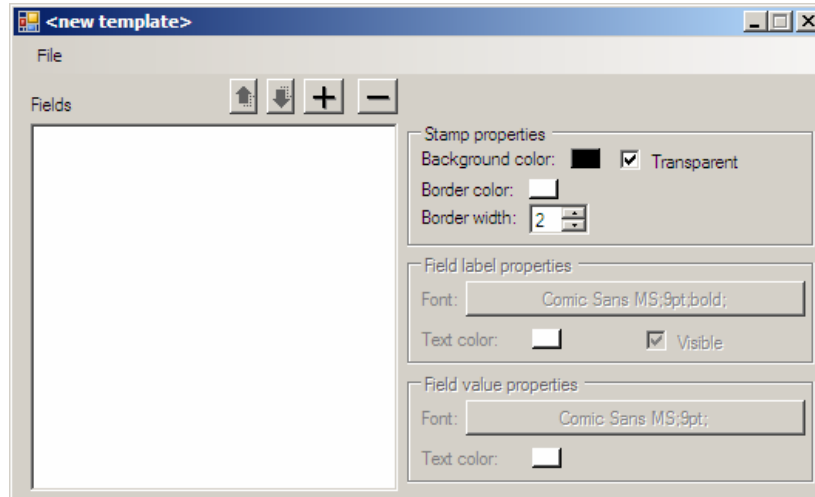
Once the stamp has been edited, click on **OK**. The stamp will appear on the image, at the desired location:



Finally, go to **Picture** menu and select **Save**. This command will NOT modify the original image. Instead, it will create a JPG image (without loss of quality) with the same name as the original image but terminated with “\_stamped”. For example, if the original image is *C:\MyPics\trapezium.png*, an image called *C:\MyPics\trapezium\_stamped.jpg* will be created.

## Creating stamp templates

PicStamper allows you to create your own templates, in case you are not satisfied with the default one! To create a template, go to **Settings** menu and select **Template editor**:



The list on the left will contain the information fields of your stamp template (i.e. title, exposure time...). The **Stamp properties** box allows you to setup the stamp's appearance, particularly:

- **Background color**: this property sets the background color of the box surrounding the stamp and it only applies if the **Transparent** checkbox is unchecked.
- **Transparent**: if checked, the box surrounding the stamp will be transparent (i.e. no background color).
- **Border color**: sets the border color of the stamp's box.
- **Border width**: sets the border width of the stamp's box.

To add a field, click on the **+** button. The program will ask you to enter the field's caption. For example: "Title" or "Author". Once accepted, the field will appear in the list. You can remove fields selecting them and clicking on **-**. The arrow buttons let you to move a field up or down in the list, to change its appearing order.

For each field, you can set the properties of its caption (label) and value. In the case of the label, you can also specify whether it should appear or not in the stamp. For example, imagine a stamp having only 2 fields: "Title" and "Comments". We set the following properties:

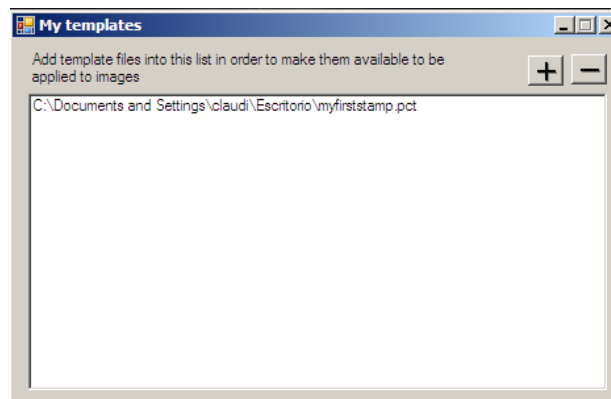
- **"Title" field**:
  - **Label**: Times New Roman 12, bold, red, visible
  - **Value**: Times New Roman 10, italics, black
- **"Comments" field**:
  - **Label**: NOT visible
  - **Value**: Times New Roman 10, italics, black

The stamp will be displayed as follows:

**Title:** *Trapezium cluster*  
*This was my first picture*

Save the template into a file by selecting **File->Save** or **File->Save as...** from the template editor window. When doing this, the program will ask you to add this template to “My Templates” list. Select **YES**.

Now your stamp template is ready to be used on your images. Before doing this, go to **Settings->My templates** to check your template has been added to “My templates” list:



In order to make a stamp template to appear in the template list of the stamp editor panel (see *Placing the first stamp* section above) it must be added into the “My templates” list. To add new templates, simply click on **+** and navigate through your file system to select the template file. To remove a template from the list, select it and click on **-**.